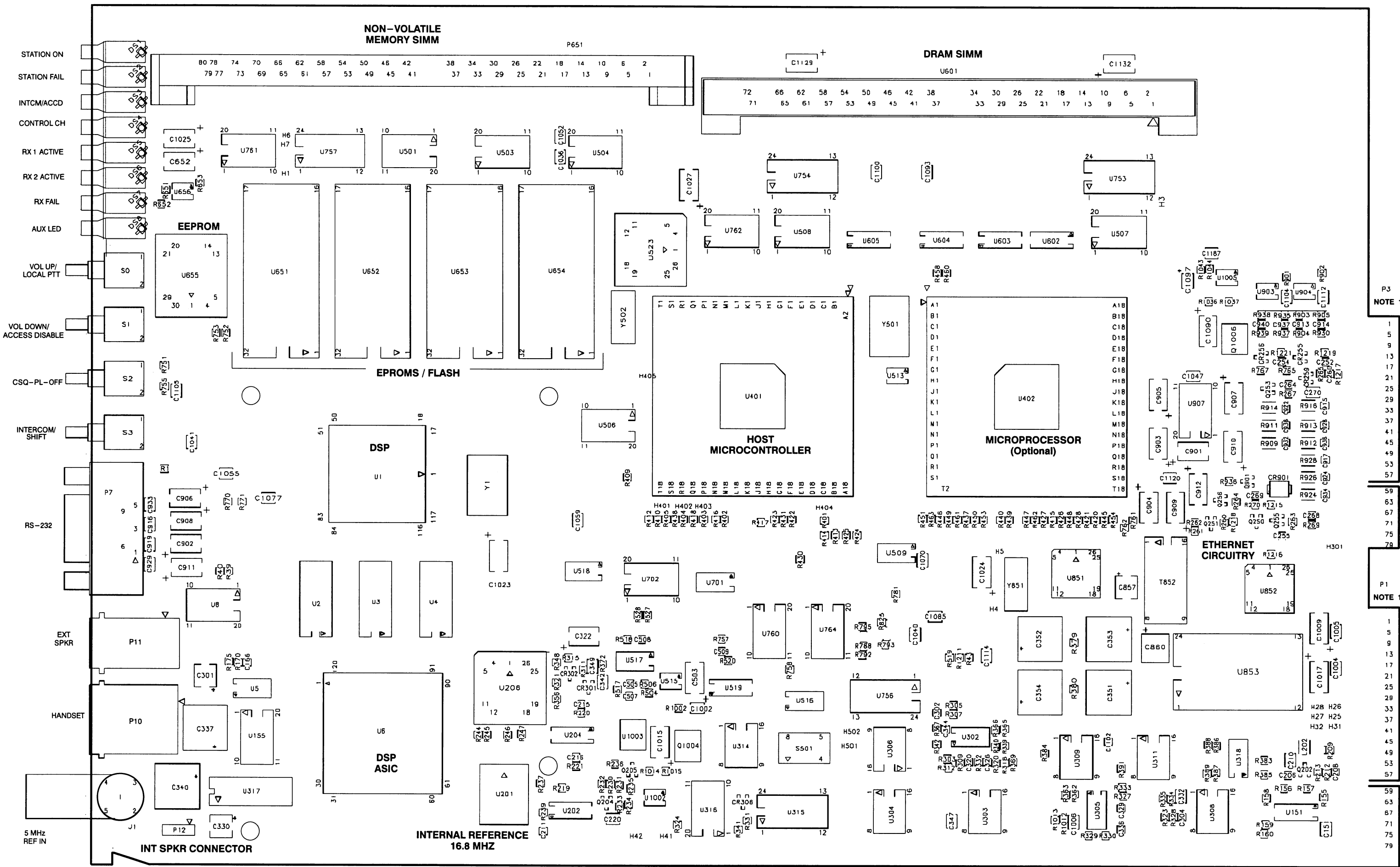


STATION CONTROL MODULE
MODELS TTN4094C / TRN7900C / CLN6686C



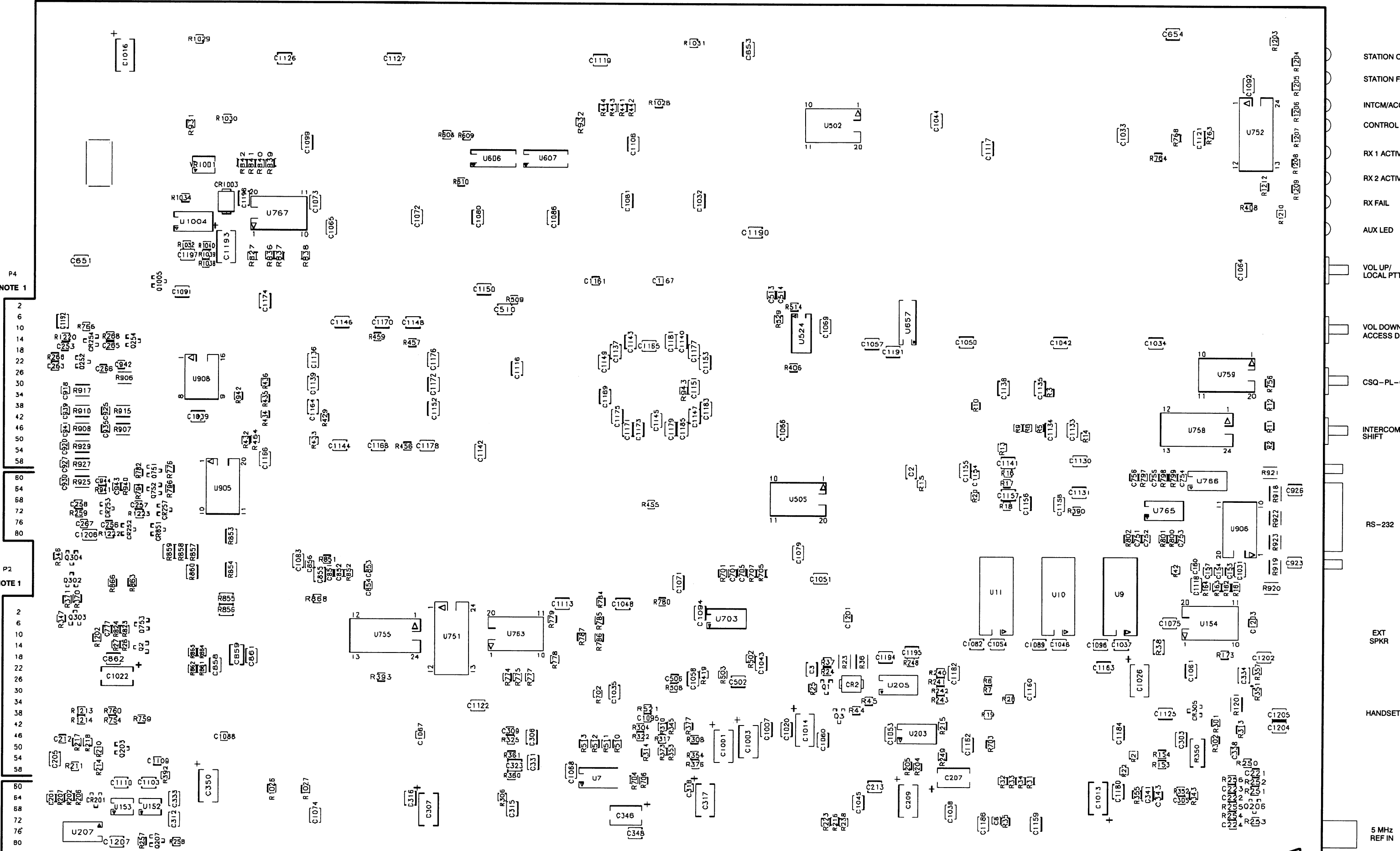
NOTES:

1. THE CIRCUIT BOARD EDGE CONNECTORS HAVE PRINTED CIRCUIT PLATED CONTACTS ON BOTH SIDES OF THE BOARD EDGE. THE MAIN SIDE CONTACTS ARE REFERENCED AS P1 AND P3 AND HAVE ODD NUMBERED CONTACTS. THE CONTACTS ON THE BACK OF THE BOARD ARE REFERENCED AS P2 AND P4 AND HAVE EVEN NUMBERED CONTACTS.

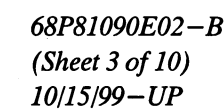
SEE THE FOLLOWING TABLE FOR EDGE CONNECTOR PIN NUMBERING/SIGNAL NAME CROSS-REFERENCE.

CONNECTOR-PIN	SIGNAL NAME	CONNECTOR-PIN	SIGNAL NAME	CONNECTOR-PIN	SIGNAL NAME	CONNECTOR-PIN	SIGNAL NAME
P1-1, 3	LOGIC GND	P2-2, 4	LOGIC GND	P3-1	WIDEBAND OUTPUT	P4-2	WIDE BAND INPUT
P1-5, 7	+14.2V	P2-6, 8	+14.2V	P3-5	LOGIC GND	P4-6	LOGIC GND
P1-9, 11, 13, 15, 17, 19, 21	+5V	P2-10, 12, 14, 16, 18, 20, 22	+5V	P3-7	WFI+	P4-8	WFI-
P1-23	LOGIC GND	P2-24	LOGIC GND	P3-9	DLAN1+	P4-10	DLAN1-
P1-25	SPI MISO	P2-26	SPI MOSI	P3-11	FAN +	P4-12	N.C.
P1-27	SPI CLK	P2-28	ALT RESET	P3-13	LOGIC GND	P4-14	LOGIC GND
P1-29	HDLC DATA	P2-30	HDLC BUSY	P3-15	PL STRIP	P4-16	AUX INDICATE
P1-31	HDLC CLK	P2-32	TDM FS	P3-17	MONITOR	P4-18	N.C.
P1-33	TDM DATA	P2-34	TDM CLK	P3-19	N.C.	P4-20	PATCH INH
P1-35	SPARE 1	P2-36	SPARE 2	P3-21	MRTT PTT	P4-22	MRTT RX AUDIO
P1-37	HOST TTPS	P2-38	EXP SPI REQ	P3-23	MRTT TX AUDIO	P4-24	N.C.
P1-39	EXP SPI GRANT	P2-40	EXP HOST REQ	P3-25	RX CARRIER	P4-26, 28	LOGIC GND
P1-41	SPI A0	P2-42	SPI A1	P3-27, 29, 31	LOGIC GND	P4-30	LOGIC GND
P1-43	TX SPI GRANT	P2-44	SPI A5	P3-33	TXD3	P4-32	MODEM RESET
P1-45	SPI A4	P2-46	SPI A3	P3-35	RTS3	P4-34	RXD3
P1-47	SPI A2	P2-48	TX SPI REQ	P3-37	DSR3	P4-36	CTS3
P1-49	PTT REQ	P2-50	TX HOST REQ	P3-39	DCD3	P4-38	LOGIC GND
P1-51, 53	LOGIC GND	P2-52, 54	LOGIC GND	P3-41	TCLK3	P4-40	LLPBK3
P1-55	RX 2.1 MHz REF	P2-56	TX 2.1 MHz REF	P3-43	DTR3	P4-42	RCLK3
P1-57	LOGIC GND	P2-58	LOGIC GND	P3-45, 47	LOGIC GND	P4-44	RLPBK3
P1-59	REF AUDIO	P2-60	VCO AUDIO	P3-49	N.C.	P4-46, 48	LOGIC GND
P1-61	LOGIC GND	P2-62	LOGIC GND	P3-51	TXD1	P4-50	RXD1
P1-63	TX WB AUDIO	P2-64	5 MHz REF (REAR)	P3-53	RTS1	P4-52	CTS1
P1-65	LOGIC GND	P2-66	LOGIC GND	P3-55	LOGIC GND	P4-54	DCD1
P1-67	RX2 AGC	P2-68	RX2 ODC	P3-57	DTR1	P4-56	DSR1
P1-69	RX2 SBI	P2-70	RX2 DATA	P3-59	TSTAT	P4-58	SERIAL ID
P1-71	RX2 DATA	P2-72	LOGIC GND	P3-61	N.C.	P4-60	TPTT
P1-73	LOGIC GND	P2-74	RX1 AGC	P3-63	RSTAT	P4-62	MUTE
P1-75	RX1 ODC	P2-76	RX1 SBI	P3-65	LOGIC GND	P4-64	CCI
P1-77	RX1 DATA	P2-78	RXT DATA	P3-67	TX DATA+	P4-66	LOGIC GND
P1-79	LOGIC GND	P2-80	LOGIC GND	P3-69	TX DATA-	P4-68	6809 RX AUDIO
				P3-71, 73, 75, 77, 79	LOGIC GND	P4-70, 72	LOGIC GND
						P4-74	GPS 1PPS
						P4-76	ETHERNET GND
						P4-78	ETHERNET SIGNAL
						P4-80	ETHERNET GND

STATION CONTROL MODULE
MODELS TTN4094C / TRN7900C / CLN6686C

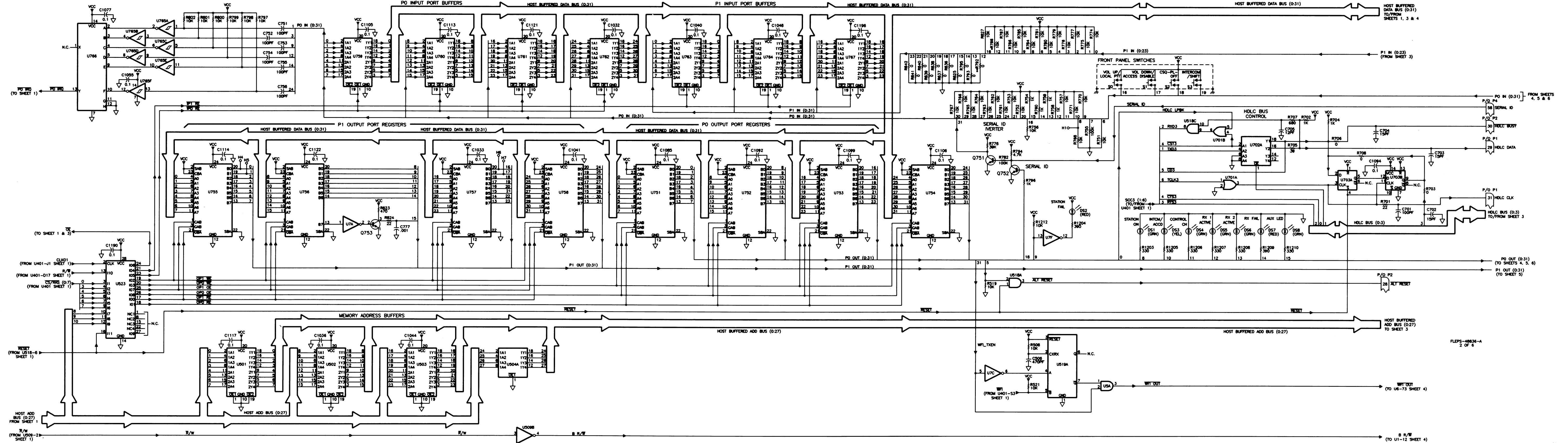


MODELS TTN4094C / TRN7900C / CLN6686C

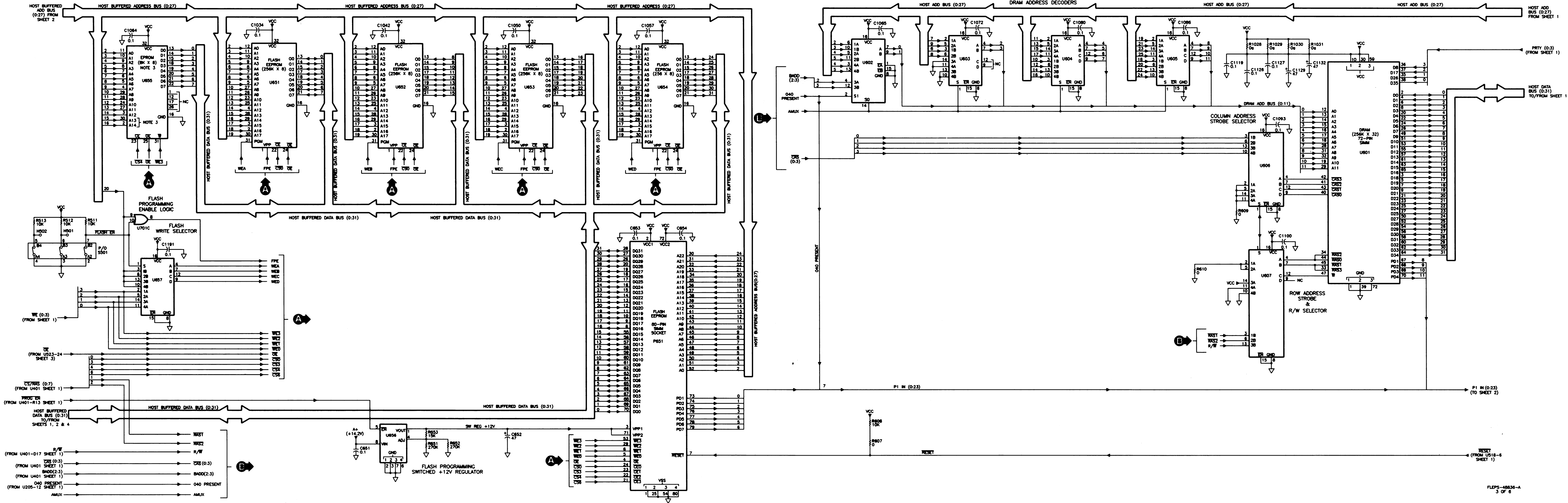


STATION CONTROL MODULE

MODELS TTN4094C / TRN7900C / CLN6686C

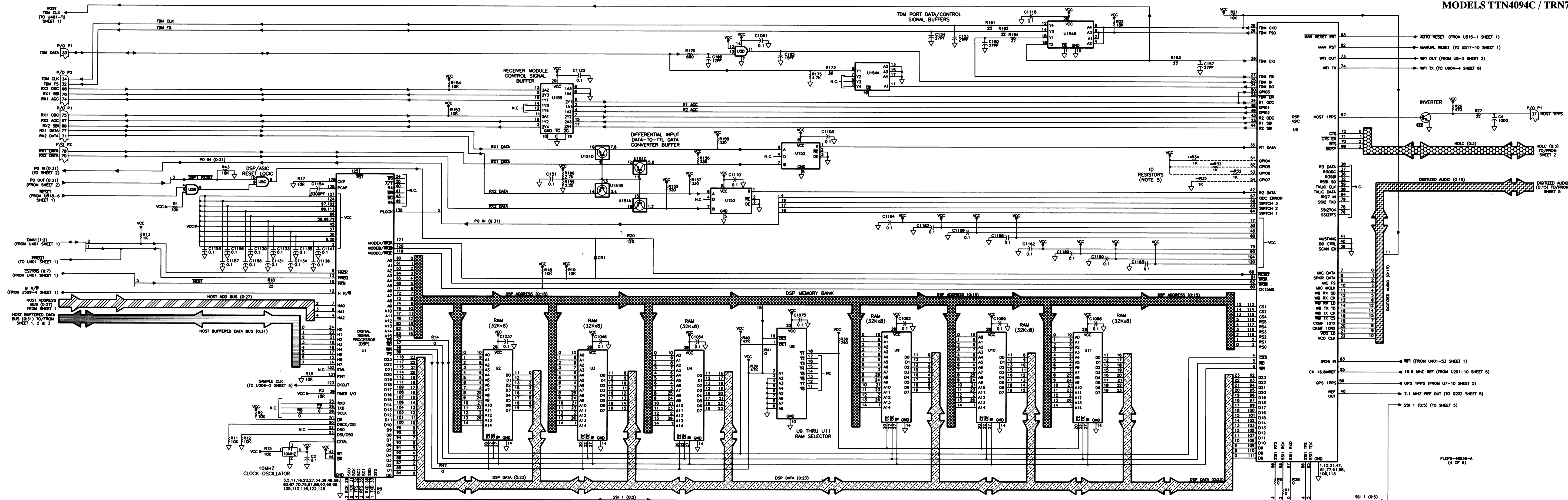


STATION CONTROL MODULE
MODELS TTN4094C / TRN7900C / CLN6686C

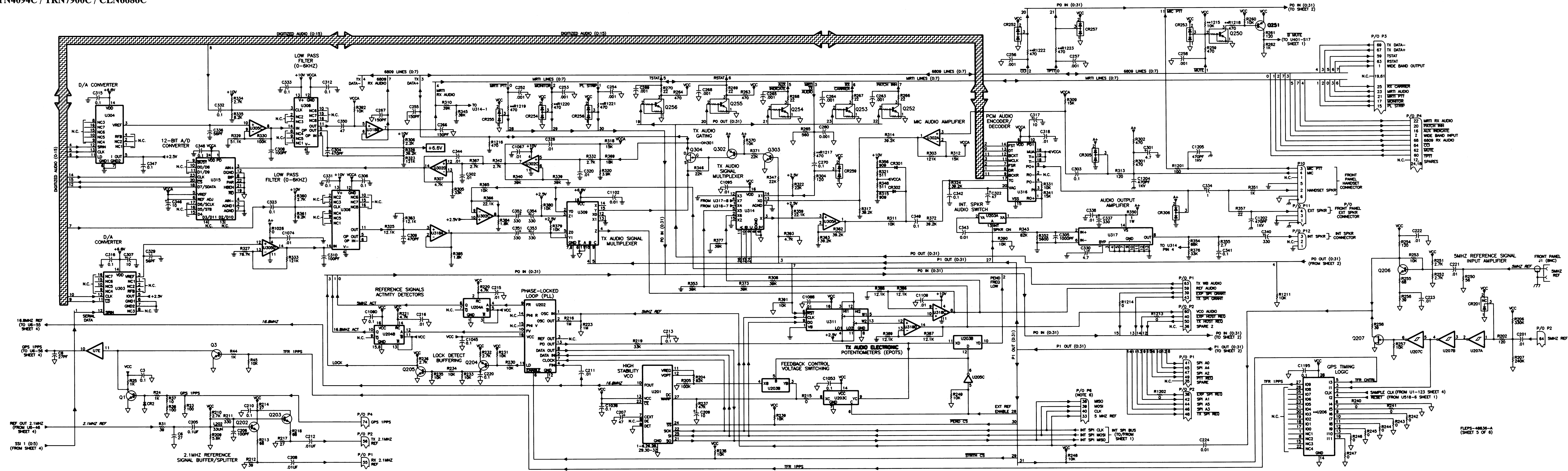


STATION CONTROL MODULE

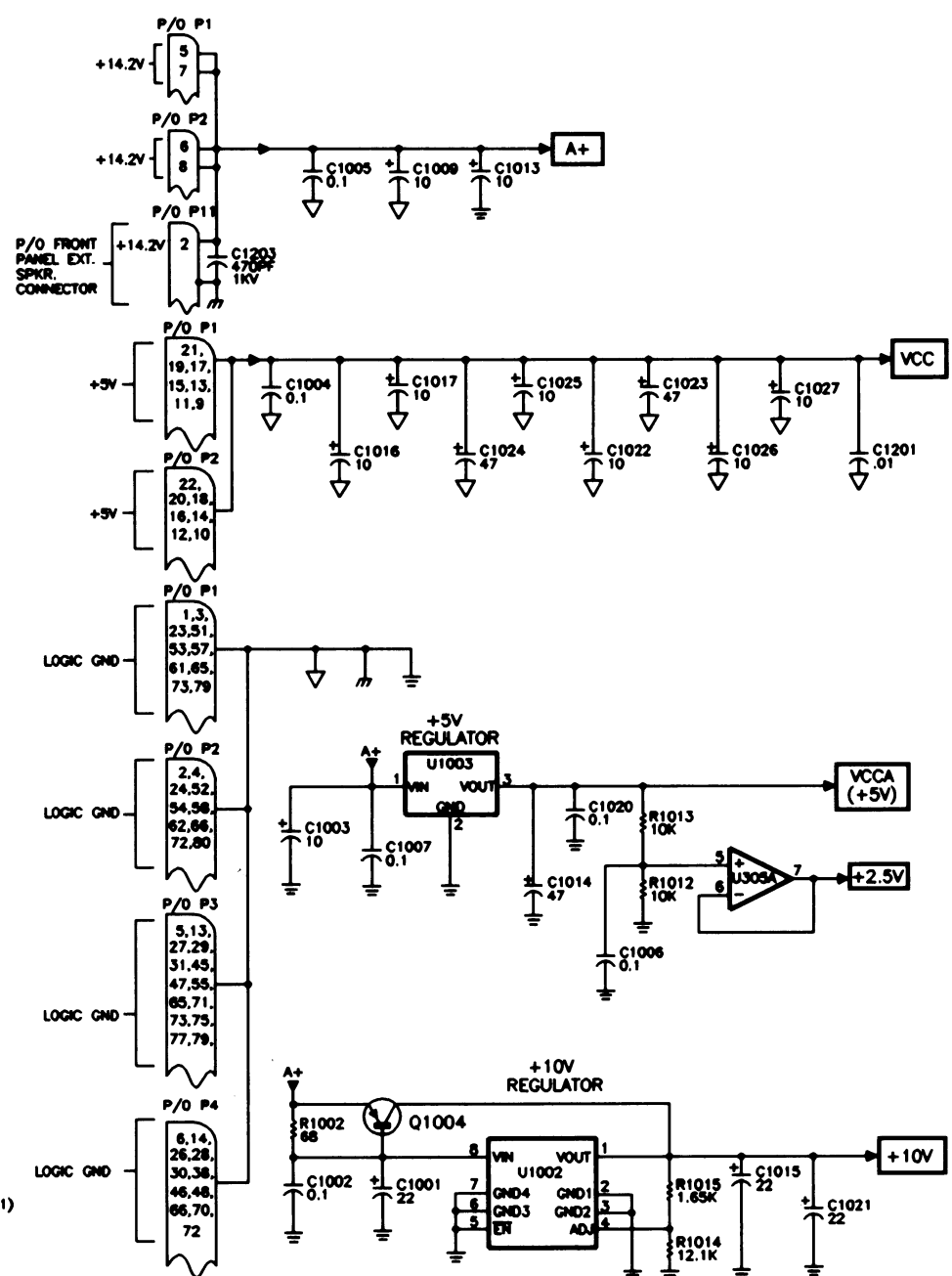
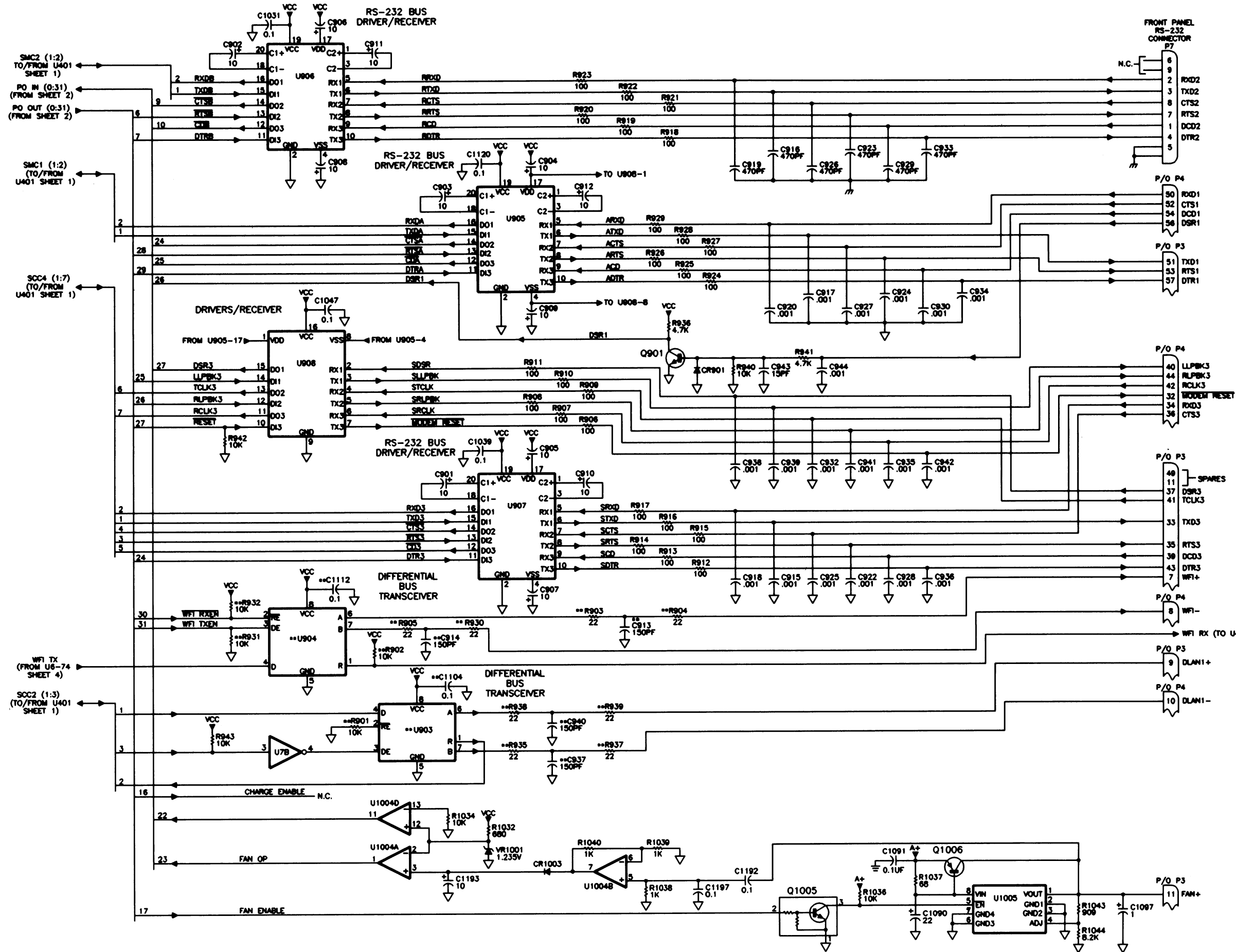
MODELS TTN4094C / TRN7900C / CLN6686C



STATION CONTROL MODULE
MODELS TTN4094C / TRN7900C / CLN6686C



STATION CONTROL MODULE



- NOTES:
1. UNLESS OTHERWISE INDICATED, ALL RESISTOR VALUES IN OHMS, CAPACITOR VALUES ARE IN MICROFARADS, AND INDUCTED VALUES ARE IN MICROHENRIES.
 2. EDGE CONNECTORS P1,P2,P3, AND P4 ARE PART OF THE PRINTED CIRCUIT BOARD AND MATERIAL WITH EXPOSED PADS.
 3. U805 IS 6K X 6. U803P00 OTHER MODELS OF STATION CONTROL MODULES MAY USE 16K X 6 OR 32K X 6. U805-30 IS USED FOR 16K X 6 AND U805-30 & 2 ARE 32K X 6.
 4. ETHERNET CIRCUITRY - U801, U802, U853, AND T852 - IS FOR FUTURE USE. PLUG-IN SOCKETS ARE PROVIDED FOR THESE COMPONENTS.
 5. THE USAGE OF ID RESISTORS R32 THROUGH R36 DEPENDS ON THE MODEL OF THE STATION. SEE THE MODEL SPECIFICATION FOR THE REQUIRED AND AVAILABLE PARTS LIST FOR DETAILS.

MODEL	R32	R33	R34	R35
TRN7800	IN	IN	IN	IN
TTN4084	OUT	OUT	OUT	OUT
CLN6886	OUT	OUT	OUT	OUT

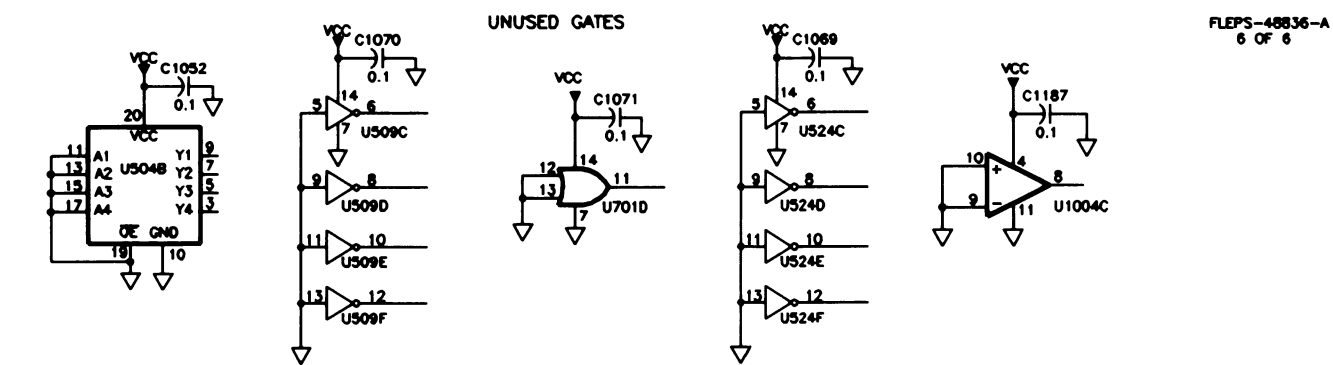
6. U402 IS FOR FUTURE USE AND IS NOT INSTALLED. ONLY TRN7800 IS EQUIPPED WITH A PLUG-IN SOCKET FOR U402.
7. SCHEMATIC COMPONENT REFERENCE DESIGNATIONS MARKED WITH * ARE USED ON TRN40B4C & CLN6888C ONLY; THOSE MARKED WITH ** ARE USED ON TRN7800C ONLY.

INTEGRATED CIRCUIT POWER AND GROUND CONNECTION:

REF DESIG	TYPE	DESCRIPTION	SUPPLY PIN	GROUND PIN
U1	DS96B002	DIGITAL SIGNAL PROCESSOR	2,9,20,30, 37,45,58, 66,69,79, 86,97,102 113,124, 127,128	3,5,11,16, 22,27,34, 36,48,56, 62,67,70, 75,81,86, 92,98,99, 105,110, 116,122, 129
U2 THRU U4	MT5C2568 DJ-20	FAST STATIC RAM, 32K X 8	28	14
U5	74AC08	QUAD 2-INPUT AND GATE	14	7
U6	CUSTOM	DSP ASIC (APPLICATION SPECIFIC INTEGRATED CIRCUIT)	17,30,45, 60,75,80, 104,120	1,15,31, 47,61,77, 91,96,106, 113
U7	MC74AC04	HEX INVERTER	14	7
U8	74BCT540	CMOS INVERTER/BUFFER, WITH 3-STATE OUTPUTS	20	10
U8 THRU U11	MT5C2568 DJ-20	STATIC RAM, 32K X 8		
U151		QUAD NPN TRANSISTOR, M3504	-	-
U152		DIFFERENTIAL BUS TRANSCONDUCTOR	8	5
U153	SNM5176			
U154	MC74AC7244	OCTAL BUFFER/LINE DRIVER, WITH 3 STATE OUTPUTS	20	10
U155	MC74HC244	OCTAL BUFFER/LINE DRIVER, WITH 3 STATE OUTPUTS	20	10
U201	CUSTOM	REFERENCE OSCILLATOR MODULE	13	6,26,28, 30-32
U202	MC145170	PHASE-LOCKED LOOP FREQUENCY SYNTHESIZER WITH SERIAL INTERFACE	16	12
U203	MC74HC4096	QUAD ANALOG SWITCH MULTIPLEXER	14	7
U204	MC74HC4538	DUAL PRECISION MONOSTABLE MULTI- VIBRATOR (DIGITALLY PROGRAMMABLE)	16	8
U205	MC74ACT14	SCHMITT TRIGGER HEX INVERTER	14	7
==U206	PAL22V10	PROGRAMMABLE ARRAY LOGIC (PAL)	28	14
==U207	MC74ACT14	SCHMITT TRIGGER HEX INVERTER	14	7
U302	MC130740	QUAD DIFFERENTIAL-INPUT OPERATIONAL AMPLIFIER	4	11
U303, U304	MAX543	12-BIT SERIAL D/A	14	6,7
U305	MC130740	QUAD DIFFERENTIAL-INPUT OPERATIONAL AMPLIFIER	4	11
U306	MAX282	FILTER, 6TH ORDER BESSIE	13	12
U308	MAX282	FILTER, 6TH ORDER BESSIE	13	12

REF DESIG	TYPE	DESCRIPTION	SUPPLY PIN	GROUND PIN
U309	74HC4063	MULTIPLEXER/DEMULTIPLEXER, TRIPLE 2 CHANNEL ANALOG	16	7,8
U311	DS1287-10	ELECTRONIC PWT DIGITAL COMMANDER	16	8
U314	74HC4051	MULTIPLEXER/DEMULTIPLEXER, 8 CHANNEL ANALOG	16	7,8
U315	MAX180	SINGLE SUPPLY 12-BIT A/D CONVERTER	24	2,7,12
U316	MC45480	+5V PDM CODEC/FILTER	8	4
U317	LM393	OPERATIONAL AMPLIFIER	14	3-5,7-9,13
U318	MC330740	QUAD DIFFERENTIAL-INPUT OPERATIONAL AMPLIFIER	4	11
U401	MC68ED360	32-BIT INTEGRATED MULTIPROTOCOL PROCESSOR	DS,D8,D9, D14,E13, E15,F14, G15,H,K2, L14,K15, L14M35,P5, P19,Q7,Q8, Q11,Q12, K4,E5	B4,D6,D7, D10,D11, D12,D13, D15,D,F4, F3,F15,H4, J4,J14,J15, K3,L15,M4, M4,M5,N14, N15,P4,P6, P15, Q4,Q5,Q6, Q8,Q10, Q13,Q14, Q15,Q16, H15,J5,K5
++U402	MC68EC400	32-BIT MICROPROCESSOR (FOR FUTURE USE--NOT SUPPLIED (SEE NOTE 7))	RL,S8,C5, C8,C10, C12,C14, H3,H16,J3, J18,L16, L2,C17,G2, M3,M5,R12, S8,S9,B14, Z,C17,G2, G17,M2, M17,R2, R17,S16	SC,B9,R10, C6,C7,C8, C11,C13, K3,K16,L3, M16,R4, R11,R15, S10,T4,B2, B4,B6,B8, B10,B13, B15,B17, D2,D17,F2, F17,H2, H17,L2, L17,M2, N17,Q2, Q17,S2, S15,S17
U501 THRU U504	MC74AC244	QUAD BUFFER/LINE DRIVER, WITH 3-STATE OUTPUTS	20	10
U505 THRU U508	MC74AC245	QUAD BUS TRANSCEIVER, WITH 3-STATE OUTPUTS	20	10
U509	MC74AC04	HEX INVERTER	14	7
U513	MC74AC12824	CLOCK DRIVER	5	4,8
U515	MC33064	UNDERVOLTAGE SENSING CIRCUIT	2	4
U516	MC74HC03	QUAD 2-INPUT NAND GATE	14	7
U517	MC74AC132	QUAD 2-INPUT OR GATE	14	7
U518	MC74HC708	QUAD 2-INPUT AND GATE	14	7
U519	MC74HC438	DUAL PRECISION MONOSTABLE MULTIVIBRA- TOR (RETROGRADEABLE, REPEATABLE)	16	1
U523	PAL22V10	PROGRAMMABLE ARRAY LOGIC (PAL)	28	14
U524	MC74AC0440	HEX INVERTER	14	7
U601	MC632230	SRAM (SINGLE IN-LINE MEMORY MODULE) DRAM 256K x 32	10,30,59	1,39,72

REF DESIG	TYPE	DESCRIPTION	SUPPLY PIN	GROUND PIN
U802	MC74ACT1530	DUAL 4-INPUT MULTIPLEXER	16	8
U803 THRU U807	MC74ACT157	QUAD 2-INPUT MULTIPLEXER	16	8
U851 THRU U854	270020	PROGRAMMED FLASH EEPROM, 256K X 8	32	16
U855	28C84	EEPROM, 8192 X 8	32	16
U856	LM2931CD	LOW DROPOUT, ADJUSTABLE, POSITIVE VOLT- AGE REGULATOR	8	2,3,6,7
U857	MC74ACT157	QUAD 2-INPUT MULTIPLEXER	16	8
U701	MC74ACT32	QUAD 2-INPUT OR GATE	14	7
U702	MC74ACT244	OCTAL BUFFER/LINE DRIVER, WITH 3-STATE OUTPUTS	20	10
U703	MC74AC74	DUAL D-TYPE FLIP-FLOP	14	7
U751 THRU U758	74AC852	3-STATE BUS TRANSCEIVER/REGISTER, WITH 3-STATE	20	10
U759 THRU U784	MC74HC244	OCTAL BUFFER/LINE DRIVER, WITH 3-STATE OUTPUTS	24	12
U785	MC74ACT14	SCHMITT TRIGGER HEX INVERTER	14	7
U786	74HC4078	8-INPUT NOR/OR GATE	14	7
U787	MC74HC244	OCTAL BUFFER/LINE DRIVER, WITH 3-STATE OUTPUTS	20	10
U851	AM79928	ETHERNET INTERFACE ADAPTER; NOT SUP- PLIED (SEE NOTE 4)	21,23	8,9,18
U852	DP8392CV	ETHERNET INTERFACE ADAPTER; NOT SUP- PLIED (SEE NOTE 4)	5,6,7,8,9, 10,11,20, 21,22,23, 24,25	16,17
U853	ZVP509	NEGATIVE 9V OUTPUT REGULATOR FOR ETHERNET INTERFACE ADAPTER; NOT SUP- PLIED (SEE NOTE 4)	1,24	12,13
~U803 ~U804	SN65176	DIFFERENTIAL BUS TRANSCEIVER	8	5
U805 THRU U807	MC145407	SINGLE SUPPLY DRIVER/RECEIVER	19	2
U808	MC145408DW	DRIVER/RECEIVER, 3-DRIVERS,3-RECEIVERS	16	9
U1002	LM2931CD	LOW DROPOUT, ADJUSTABLE, POSITIVE VOLTAGE REGULATOR	8	2,3,6,7
U1003	MC33070	+5V VOLTAGE REGULATOR	1	2
U1004	MC73845	QUAD DIFFERENTIAL-INPUT OPERATIONAL AMPLIFIER	4	11
U1005	LM2931CD	LOW DROPOUT ADJUSTABLE POSITIVE VOLT- AGE REGULATOR	8	2,3,6,7



STATION CONTROL MODULE
MODELS TTN4094C / TRN7900C / CLN6686C

parts list

TRN7900C EPIC Station Control Module Board PL-13105-A

REFERENCE SYMBOL	MOTOROLA PART NO.	DESCRIPTION
		capacitor, fixed:
C23	2113741B69	0.1 uF, ±5%; 50 V
C8	2113740A39	27 pF, ±5%; 50 V
C151	2113741B69	0.1 uF, ±5%; 50 V
C153,154	2113740A39	27 pF, ±5%; 50 V
C157	2113740A39	27 pF, ±5%; 50 V
C160	2113740A39	27 pF, ±5%; 50 V
C166	2113740A31	12 pF, ±5%; 50 V
C201	2113741A45	0.01 uF, ±5%; 50 V
C205	2113741B69	0.1 uF, ±5%; 50 V
C206	2113740A55	100 pF, ±5%; 50 V
C207	2311049A23	47 uF, ±10%; 10 V
C208	2113741A45	0.01 uF, ±5%; 50 V
C209	2311049A45	10 uF, ±10%; 35 V
C210	2113741B69	0.1 uF, ±5%; 50 V
C211,212	2113741A45	0.01 uF, ±5%; 50 V
C213	2113741B69	0.1 uF, ±5%; 50 V
C215,216	2113741A45	0.01 uF, ±5%; 50 V
C220	2113741B69	0.1 uF, ±5%; 50 V
C221 thru 224	2113741A45	0.01 uF, ±5%; 50 V
C252 thru 254	2113740A79	1000 pF, ±5%; 50 V
C255	2113740A59	150 pF, ±5%; 50V
C256 thru 258	2113740A79	1000 pF, ±5%; 50 V
C260	2113740A79	1000 pF, ±5%; 50 V
C263 thru 265	2113740A79	1000 pF, ±5%; 50 V
C266,267	2113740A59	150 pF, ±5%; 50V
C268,269	2113740A79	1000 pF, ±5%; 50 V
C270	2113741B69	0.1 uF, ±5%; 50 V
C301	2380090M22	4.007 uF, ±20%; 50V
C302	2113741A45	0.01 uF, ±5%; 50 V
C303	2113741B69	0.1 uF, ±5%; 50 V
C304	2113740A71	470 pF, ±5%; 50 V
C305	2113740A79	1000 pF, ±5%; 50 V
C306	2113741B69	0.1 uF, ±5%; 50 V
C307	2311049A45	10 uF, ±10%; 35 V
C309	2113740A71	470 pF, ±5%; 50 V
C312	2113741B69	0.1 uF, ±5%; 50 V
C315,316	2113741B69	0.1 uF, ±5%; 50 V
C317	2311049A45	10 uF, ±10%; 35 V
C318	2113741A45	0.01 uF, ±5%; 50 V
C320	2113741A45	0.01 uF, ±5%; 50 V
C322	2311049A23	47 uF, ±10%; 10 V
C323	2113741B69	0.1 uF, ±5%; 50 V
C326	2113741A45	0.01 uF, ±5%; 50 V
C329	2113740A49	56 pF, ±5%; 50V
C330	2380090M22	4.007 uF, ±20%; 50V
C331 thru 333	2113741B69	0.1 uF, ±5%; 50 V
C334	2311049A08	1 uF, ±10%; 35 V
C336	2113740A49	56 pF, ±5%; 50V
C337	2380090M27	330 uF, ±20%; 16 V
C338	2113741A45	0.01 uF, ±5%; 50 V
C340	2380090M27	330 uF, ±20%; 16 V
C341,342	2113741B69	0.1 uF, ±5%; 50 V
C343,344	2113741A45	0.01 uF, ±5%; 50 V
C346	2311049A45	10 uF, ±10%; 35 V
C347 thru 349	2113741B69	0.1 uF, ±5%; 50 V
C350	2311049A23	47 uF, ±10%; 10 V
C351 thru 354	2380090M27	330 uF, ±20%; 16 V
C502	2113741B69	0.1 uF, ±5%; 50 V
C503	2311049A45	10 uF, ±10%; 35 V
C505	2113740A31	12 pF, ±5%; 50 V
C506	2113740A71	470 pF, ±5%; 50 V
C507,508	2113740A39	27 pF, ±5%; 50 V
C509	2113740A55	100 pF, ±5%; 50 V
C510	2113741B69	0.1 uF, ±5%; 50 V
C513,514	2113740A36	20 pF, ±5%; 50V

REFERENCE SYMBOL	MOTOROLA PART NO.	DESCRIPTION
C651	2113741B69	0.1 uF, ±5%; 50 V
C652	2311049A23	47 uF, ±10%; 10 V
C653,654	2113741B69	0.1 uF, ±5%; 50 V
C701	2113740A55	100 pF, ±5%; 50 V
C705	2113740A31	12 pF, ±5%; 50 V
C751 thru 756	2113740A55	100 pF, ±5%; 50 V
C777	2113740A79	1000 pF, ±5%; 50 V
C851	2113740A79	880 pF, ±5%; 50 V
C852	2113740A36	20 pF, ±5%; 50V
C853,854	2113740A55	100 pF, ±5%; 50 V
C855	2113741B69	0.1 uF, ±5%; 50 V
C856	2113741A37	4700 pF, ±5%; 50 V
C857	2380090M22	4.007 uF, ±20%; 50V
C858	2113741B69	0.1 uF, ±5%; 50 V
C859	211391B609	CAP CHIP 10000PF 1000V 20% X7R
C860	2380090M24	10 uF, ±20%; 50 V
C861	2113918A05	470 pF, ±20%; 1000 V
C862	2113741B69	0.1 uF, ±5%; 50 V
C901 thru 912	2311049A45	10 uF, ±10%; 35 V
C913,914	2311049A59	150 pF, ±5%; 50V
C915	2113740A79	1000 pF, ±5%; 50 V
C916	2113741A45	0.01 uF, ±5%; 50 V
C917,918	2113740A79	1000 pF, ±5%; 50 V
C919	2113918A05	470 pF, ±20%; 1000 V
C920	2113740A79	1000 pF, ±5%; 50 V
C922	2113740A79	1000 pF, ±5%; 50 V
C923	2113918A05	470 pF, ±20%; 1000 V
C924,925	2113740A79	1000 pF, ±5%; 50 V
C926	2113918A05	470 pF, ±20%; 1000 V
C927,928	2113740A79	1000 pF, ±5%; 50 V
C929	2113918A05	470 pF, ±20%; 1000 V
C930	2113740A79	1000 pF, ±5%; 50 V
C932	2113740A79	1000 pF, ±5%; 50 V
C933	2113918A05	470 pF, ±20%; 1000 V
C934 thru 936	2113740A79	1000 pF, ±5%; 50 V
C937	2113740A59	150 pF, ±5%; 50V
C938,939	2113740A79	1000 pF, ±5%; 50 V
C940	2113740A59	150 pF, ±5%; 50V
C941,942	2113740A79	1000 pF, ±5%; 50 V
C943	2113740A33	15 pF, ±5%; 35 V
C944	2113740A79	1000 pF, ±5%; 50 V
C1001	2311049A21	22 uF, ±10%; 20 V
C1002	2113741B69	0.1 uF, ±5%; 50 V
C1003	2311049A45	10 uF, ±10%; 35 V
C1004 thru 1007	2113741B69	0.1 uF, ±5%; 50 V
C1009	2113740A45	10 uF, ±10%; 35 V
C1013	2311049A45	10 uF, ±10%; 35 V
C1014	0985237U02	47 uF, ±10%; 10 V
C1015	2311049A21	22 uF, ±10%; 20 V
C1016,1017	23113922A03	HDR 3 POS STR. 1 CTR GLD PLTD
C1020	2113741B69	0.1 uF, ±5%; 50 V
C1022	2113740A45	10 uF, ±10%; 35 V
C1023,1024	2311049A23	47 uF, ±10%; 10 V
C1025 thru 1027	2113740A45	10 uF, ±10%; 35 V
C1031 thru 1048	2113741B69	0.1 uF, ±5%; 50 V
C1050 thru 1055	2113741B69	0.1 uF, ±5%; 50 V
C1057 thru 1061	2113741B69	0.1 uF, ±5%; 50 V
C1064 thru 1066	2113741B69	0.1 uF, ±5%; 50 V
C1067	2113741A45	0.01 uF, ±5%; 50 V
C1068 thru 1075	2113741B69	0.1 uF, ±5%; 50 V
C1077	2113741B69	0.1 uF, ±5%; 50 V
C1079 thru 1083	2113741B69	0.1 uF, ±5%; 50 V
C1085,1086	2113741B69	0.1 uF, ±5%; 50 V
C1088	4813824A17	NPN
C1089	2113741B69	0.1 uF, ±5%; 50 V
C1090	2311049A21	22 uF, ±10%; 20 V
C1091 thru 1094	2113741B69	0.1 uF, ±5%; 50 V
C1095	2113741A45	0.01 uF, ±5%; 50 V
C1096	2113741B69	0.1 uF, ±5%; 50 V
C1097	2311049A08	1 uF, ±10%; 35 V

REFERENCE SYMBOL	MOTOROLA PART NO.	DESCRIPTION
C1098,1100	2113741B69	0.1 uF, ±5%; 50 V
C1102	2113741A45	0.01 uF, ±5%; 50 V
C1103 thru 1106	2113741B69	0.1 uF, ±5%; 50 V
C1108	2113741A45	0.01 uF, ±5%; 50 V
C1110	2113741B69	0.1 uF, ±5%; 50 V
C1112 thru 1114	2113740A55	100 pF, ±5%; 50 V
C1116 thru 1122	2113741B69	0.1 uF, ±5%; 50 V
C1125 thru 1127	2113741B69	0.1 uF, ±5%; 50 V
C1129	2311049A23	47 uF, ±10%; 10 V
C1130,1131	2113741B69	0.1 uF, ±5%; 50 V
C1132	2311049A23	47 uF, ±10%; 10 V
C1133 thru 1153	2113741B69	0.1 uF, ±5%; 50 V
C1154	2113741A33	3300 pF, ±5%; 50V
C1155 thru 1160	2113741B69	0.1 uF, ±5%; 50 V
C1161	2113740A69	390 pF, ±5%; 50V
C1162 thru 1166	2113741B69	0.1 uF, ±5%; 50 V
C1167	2113741A45	0.01 uF, ±5%; 50 V
C1168 thru 1187	2113741B69	0.1 uF, ±5%; 50 V
C1190 thru 1192	2113741B69	0.1 uF, ±5%; 50 V
C1193	2311049A45	10 uF, ±10%; 35 V
C1194 thru 1197	2113741B69	0.1 uF, ±5%; 50 V
C1201	2113741A45	0.01 uF, ±5%; 50 V
C1202	2113918A05	470 pF, ±20%; 1000 V
C1203	2113740A71	470 pF, ±5%; 50 V
C1204 thru 1206	2113918A05	470 pF, ±20%; 1000 V
C1207	2113741B69	0.1 uF, ±5%; 50 V
CR2	4813833B01	diode (see note): Schottky type
CR201	4882290T02	Hot Carrier
CR252 thru 257	4813833C05	dual 70 V
CR259	4813833C05	dual 70 V
CR301,302	4813833A05	Hot Carrier
CR305,306	4813833C05	dual 70 V
CR307	4813833C10	0.1A, 70 V
CR381	4813833B01	Schottky type
CR901	4813833B01	Schottky type
CR1003	4813833B01	Schottky type
DS1	4882198T06	SUBMINIATURE LED GRN SM
DS2	4882198T04	SUBMINIATURE LED RED SM
DS3	4882198T05	SUBMINIATURE LED YEL SM
DS4 thru 6	4882198T06	SUBMINIATURE LED GRN SM
DS7	4882198T04	SUBMINIATURE LED RED SM
DS8	4882198T06	SUBMINIATURE LED GRN SM
J1	0984963T02	connector: BNC jack
P7	0984524T07	9-pin, right angle
P10	0985237U02	jack, 6/6
P11	0985237U01	jack, 4/4
P12	23113922A03	HDR 3 POS STR. 1 CTR GLD PLTD
P651	0982286V03	SKT SIMM 22.5 DEGREES 80 POS
L202	2411087A44	33 uH
Q1	4813824A10	NPN
Q2	4884955T01	NPN
Q3	4813824A10	NPN
Q202,203	4813824A10	NPN
Q204	4813824A17	PNP
Q205,206	4813824A10	NPN
Q207	2N7002LT1	FET
Q250	4884955T01	NPN
Q251	4813824A17	PNP
Q252 thru 256	4884955T01	NPN
Q253	4813824A17	PNP
Q303	4813824A10	NPN
Q304	4813824A10	NPN
Q305	4813823A08	P-C FET type
Q751,752	4813824A10	NPN
Q753	4884955T01	NPN

REFERENCE SYMBOL	MOTOROLA PART NO.	DESCRIPTION
Q901	4813824A10	NPN
Q1004	4813822A09	PNP
Q1005	4884955T01	NPN
Q1006	4813822A16	resistor, PNP 100V 4A MJ253T4
resistor, fixed:		
R1 thru 3	0611079A98	10K, ±5%; 1/10 W
R5 thru 9	0611079A01	O ohms, ±5%; 1/10 W
R10	0611079A34	22 ohms, ±5%; 1/10 W
R11,12	0611079A98	10K, ±5%; 1/10 W
R13	0611079A74	1K, ±5%; 1/10 W
R14	0611079A01	O ohms, ±5%; 1/10 W
R15 thru 19	0611079A98	10K, ±5%; 1/10 W
R20	0611079A52	120 ohms, ±5%; 1/10 W
R21,22	0611079A98	10K, ±5%; 1/10 W
R23	0611072A25	100 ohms, ±5%; 1/4 W
R24,25	0611079A74	1K, ±5%; 1/10 W
R26	0611079A66	470 ohms, ±5%; 1/10 W
R27	0611079A34	22 ohms, ±5%; 1/10 W
R28	0611079A01	O ohms, ±5%; 1/10 W
R31	0611079A40	39 ohms, ±5%; 1/10 W
R32 thru 35	0611079A74	1K, ±5%; 1/10 W
R36	0611072A25	100 ohms, ±5%; 1/4 W
R37	0611079A26	10 ohms, ±5%; 1/10 W
R38	0611077A59	240 ohms, ±5%; 1/8 W
R39,40	0611079B15	47K, ±5%; 1/10 W
R42	0611079A01	O ohms, ±5%; 1/10 W
R43	0611079A98	10K, ±5%; 1/10 W
R44	0611079A74	1K, ±5%; 1/10 W
R45	0611079A98	10K, ±5%; 1/10 W
R153,154	0611079A98	10K, ±5%; 1/10 W
R155 thru 158	0611079A62	330 ohms, ±5%; 1/10 W
R159	0611079A82	2200 ohms, ±5%; 1/10 W
R160	0611079A84	2700 ohms, ±5%; 1/10 W
R161 thru 164	0611079A34	22 ohms, ±5%; 1/10 W
R170	0611079A70	680 ohms, ±5%; 1/10 W
R173	0611079A40	39 ohms, ±5%; 1/10 W
R175	0611079A90	4700 ohms, ±5%; 1/10 W
R202	0611079A52	120 ohms, ±5%; 1/10 W
R204	0611079B21	82K, ±5%; 1/10 W
R205	0611079B13	100K, ±5%; 1/10 W
R206	0611079B35	330K, ±5%; 1/10W
R207	0611079B32	240K, ±5%; 1/10 W
R209	0611079A92	5600 ohms, ±5%; 1/10 W
R210	0611079A84	2700 ohms, ±5%; 1/10 W
R211	0611079A62	330 ohms, ±5%; 1/10 W
R212	0611079A40	39 ohms, ±5%; 1/10 W
R213	0611079A46	68 ohms, ±5%; 1/10 W
R214	0611079A36	27 ohms, ±5%; 1/10 W
R215	0611079A01	O ohms, ±5%; 1/10 W
R216	0611079B47	1 MEG, ±5%; 1/10 W
R217	0611079A36	27 ohms, ±5%; 1/10 W
R218	0611079A46	68 ohms, ±5%; 1/10 W
R219	0611079B11	33K, ±5%; 1/10 W
R220,221	0611079A90	4700 ohms, ±5%; 1/10 W
R223	0611079B47	1 MEG, ±5%; 1/10 W
R230,231	0611079A98	10K, ±5%; 1/10 W
R232	0611079A84	2700 ohms, ±5%; 1/10 W
R233 thru 235	0611079A98	10K, ±5%; 1/10 W
R236	0611079A84	2700 ohms, ±5%; 1/10 W
R237	0611079B15	47K, ±5%; 1/10 W
R238,239	0611079A98	10K, ±5%; 1/10 W
R240 thru 247	0611079A01	O ohms, ±5%; 1/10 W
R248,249	0611079A98	10K, ±5%; 1/10 W
R250	0611079A44	56 ohms, ±5%; 1/10 W
R251,252	0611079A84	2700 ohms, ±5%; 1/10 W
R253	0611079A98	10K, ±5%; 1/10 W
R254	0611079A52	120 ohms, ±5%; 1/10 W
R255	0611079A46	68 ohms, ±5%; 1/10 W
R256	0611079A40	39 ohms, ±5%; 1/10 W
R257	0611079A98	10K, ±5%; 1/10 W

STATION CONTROL MODULE
MODELS TTN4094C / TRN7900C / CLN6686C

parts list

TTN4094C / CLN6686C EPIC Station Control Module Board PL-13107-A

REFERENCE SYMBOL	MOTOROLA PART NO.	DESCRIPTION	REFERENCE SYMBOL	MOTOROLA PART NO.	DESCRIPTION	REFERENCE SYMBOL	MOTOROLA PART NO.	DESCRIPTION	REFERENCE SYMBOL	MOTOROLA PART NO.	DESCRIPTION	REFERENCE SYMBOL	MOTOROLA PART NO.	DESCRIPTION	REFERENCE SYMBOL	MOTOROLA PART NO.	DESCRIPTION	REFERENCE SYMBOL	MOTOROLA PART NO.	DESCRIPTION
C2.3	2113741B69	capacitor, fixed: 0.1 uF, ±5%; 50 V	C653,854	2113741B69	0.1 uF, ±5%; 50 V	C1110	2113741B69	0.1 uF, ±5%; 50 V	Q205,206	4813824A10	NPN	R238,239	0611079A98	10K, ±5%; 1/10 W	R369	0611079B05	78.7 ohms, ±1%; 1/8 W	R853,854	0611077D87	240 ohms, ±5%; 1/8 W
C8	2113740A39	27 pF, ±5%; 50 V	C701	2113740A55	100 pF, ±5%; 50 V	C1113,1114	2113741B69	0.1 uF, ±5%; 50 V	Q207	2N7002LT1	FET	R240 thru 247	0611079A98	O ohms, ±5%; 1/10 W	R370	0611077A59	18K, ±5%; 1/10 W	R855,856	0611077A59	240 ohms, ±5%; 1/8 W
C151	2113741B69	0.1 uF, ±5%; 50 V	C705	2113740A31	12 pF, ±5%; 50 V	C1116 thru 1122	2113741B69	0.1 uF, ±5%; 50 V	Q250	4884955T01	NPN	R248,249	0611079A98	10K, ±5%; 1/10 W	R371	0611079B07	22K, ±5%; 1/10 W	R857 thru 860	0611077F12	1 MEK, ±5%; 1/8 W
C153,154	2113740A39	27 pF, ±5%; 50 V	C751 thru 756	2113740A55	100 pF, ±5%; 50 V	C1125 thru 1127	2113741B69	0.1 uF, ±5%; 50 V	Q251	4813824A17	PNP	R250	0611079A44	56 ohms, ±5%; 1/10 W	R372	0611079B47	Resistor chip 39.2K 1/10 W 1%	R861,862	0611079B47	1 MEG, ±5%; 1/10 W
C157	2113740A39	27 pF, ±5%; 50 V	C777	2113740A79	1000 pF, ±5%; 50 V	C1129	2311049A23	47 uF, ±10%; 10 V	Q252 thru 256	4884955T01	NPN	R251,252	0611079A84	2700 ohms, ±5%; 1/10 W	R373	0611079B13	39K, ±5%; 1/10 W	R863	0611079A01	O ohms, ±5%; 1/10 W
C160	2113740A39	27 pF, ±5%; 50 V	C851	2113741B69	680 pF, ±5%; 50 V	C1130,1131	4813824A17	0.1 uF, ±5%; 50 V	Q302	4813824A17	PNP	R253	0611079A98	10K, ±5%; 1/10 W	R376	0611079B47	33K, ±5%; 1/10 W	R864,865	0611079B47	1 MEG, ±5%; 1/10 W
C166	2113740A31	12 pF, ±5%; 50 V	C852	2113740A36	20 pF, ±5%; 50V	C1132	2311049A23	47 uF, ±10%; 10 V	Q303	4813824A10	PNP	R254	0611079A52	120 ohms, ±5%; 1/10 W	R377	0611079B13	39K, ±5%; 1/10 W	R866	0611079F01	Resistor: chip 1.00K 1/10 W
C201	2113741A45	0.01 uF, ±5%; 50 V	C853,854	2113740A55	100 pF, ±5%; 50 V	C1133 thru 1135	4813823A08	0.1 uF, ±5%; 50 V	Q304	4813823A08	P-CH FET type	R255	0611079A46	68 ohms, ±5%; 1/10 W	R379,380	0611079A90	4700 ohms, ±5%; 1/10 W	R868	0611079A90	4700 ohms, ±5%; 1/10 W
C205	2113741B69	0.1 uF, ±5%; 50 V	C855	2113741B69	0.1 uF, ±5%; 50 V	C1137,1138	2113741B69	0.1 uF, ±5%; 50 V	Q751,752	4813824A10	NPN	R256	0611079A40	39 ohms, ±5%; 1/10 W	R383	0611079G09	12.1K, 1/10 W; ±1%	R906 thru 929	0611072A25	100 ohms, ±5%; 1/4 W
C206	2113740A55	100 pF, ±5%; 50 V	C856	2113741A37	4700 pF, ±5%; 50 V	C1140,1141	2113741B69	0.1 uF, ±5%; 50 V	Q753	4884955T01	NPN	R257	0611079A98	10K, ±5%; 1/10 W	R384,385	0611079A80	1800 ohms, ±5%; 1/10 W	R936	0611079A90	4700 ohms, ±5%; 1/10 W
C207	2311049A23	47 uF, ±10%; 10 V	C857	2380090M22	4.007 uF, ±20%; 50V	C1143	2113741B69	0.1 uF, ±5%; 50 V	Q901	4813824A10	NPN	R258	0611079A40	39 ohms, ±5%; 1/10 W	R386 thru 389	0611079G09	12.1K, 1/10 W; ±1%	R940	0611079A98	10K, ±5%; 1/10 W
C208	2113741A45	0.01 uF, ±5%; 50 V	C858	2113741B69	0.1 uF, ±5%; 50 V	C1145	2113741B69	0.1 uF, ±5%; 50 V	Q1004	4813822A09	PNP	R259	0611079A66	470 ohms, ±5%; 1/10 W	R390 thru 392	0611079A90	4700 ohms, ±5%; 1/10 W	R941	0611079A98	10K, ±5%; 1/10 W
C209	2311049A45	10 uF, ±10%; 35 V	C859	2113918B09	CAP CHIP 10000PF 1000V 20% X7R	C1147	2113741B69	0.1 uF, ±5%; 50 V	Q1005	4884955T01	NPN	R260	0611079A98	10K, ±5%; 1/10 W	R393	0611079A90	4700 ohms, ±5%; 1/10 W	R942,943	0611079A98	10K, ±5%; 1/10 W
C210	2113741B69	0.1 uF, ±5%; 50 V	C860	2380090M24	10 uF, ±20%; 50 V	C1149	2113741B69	0.1 uF, ±5%; 50 V	Q1006	4813822A16	TSTR PNP 100V 4A MJD253T4	R261	0611079A52	120 ohms, ±5%; 1/10 W	R401 thru 406	0611079A98	68 ohms, ±5%; 1/10 W	R1002	0611079A46	68 ohms, ±5%; 1/10 W
C211,212	2113741A45	0.01 uF, ±5%; 50 V	C861	2113918A05	470 pF, ±20%; 1000 V	C1151	2113741B69	0.1 uF, ±5%; 50 V				R262	0611079A74	1K, ±5%; 1/10 W	R408,409	0611079A98	10K, ±5%; 1/10 W	R1012,1013	0611079G01	10K, ±1%; 1/10 W
C213	2113741B69	0.1 uF, ±5%; 50 V	C862	2113741B69	0.1 uF, ±5%; 50 V	C1153	2113741B69	0.1 uF, ±5%; 50 V				R263,264	0611079A66	470 ohms, ±5%; 1/10 W	R410	0611079A74	1K, ±5%; 1/10 W	R1014	0611079G09	12.1K, 1/10 W; ±1%
C215,216	2113741A45	0.01 uF, ±5%; 50 V	C901 thru 912	2311049A45	10 uF, ±10%; 35 V	C1154	2113741A33	3300 pF, ±5%; 50V				R265	0611079A68	560 5 1/10 W	R412	0611079A74	1K, ±5%; 1/10 W	R1015	0611079F22	Resistor: chip 1.65K 1/10 W
C220	2113741B69	0.1 uF, ±5%; 50 V	C915	2113740A79	1000 pF, ±5%; 50 V	C1155 thru 1160	2113741B69	0.1 uF, ±5%; 50 V	R5 thru 9	0611079A01	O ohms, ±5%; 1/10 W	R266 thru 270	0611079A34	22 ohms, ±5%; 1/10 W	R413,414	0611079A01	O ohms, ±5%; 1/10 W	R1026	0611079A01	O ohms, ±5%; 1/10 W
C221 thru 224	2113741A45	0.01 uF, ±5%; 50 V	C916	2113918A05	470 pF, ±20%; 1000 V	C1161	2113740A69	390 pF, ±5%; 50V	R10	0611079A98	10K, ±5%; 1/10 W	R301,302	0611079A66	470 ohms, ±5%; 1/10 W	R415	0611079A90	4700 ohms, ±5%; 1/10 W	R1028 thru 1031	0611079A01	O ohms, ±5%; 1/10 W
C252 thru 254	2113740A79	1000 pF, ±5%; 50 V	C917,918	2113740A79	1000 pF, ±5%; 50 V	C1162,1163	2113741B69	0.1 uF, ±5%; 50 V	R11	0611079A74	1K, ±5%; 1/10 W	R303	0611079E09	Resistor: chip 121.0K 1/10 W 1%	R416	0611079A98	10K, ±5%; 1/10 W	R1032	0611079A70	880 ohms, ±5%; 1/10 W
C255	2113740A59	150 pF, ±5%; 50V	C919	2113918A05	470 pF, ±20%; 1000 V	C1165	2113741B69	0.1 uF, ±5%; 50 V	R13	0611079A74	1K, ±5%; 1/10 W	R304	0611079A52	120 ohms, ±5%; 1/10 W	R417	0611079A82	2200 ohms, ±5%; 1/10 W	R1034	0611079A98	10K, ±5%; 1/10 W
C256 thru 258	2113740A79	1000 pF, ±5%; 50 V	C920	2113740A79	1000 pF, ±5%; 50 V	C1167	2113741A45	0.01 uF, ±5%; 50 V	R14	0611079A01	O ohms, ±5%; 1/10 W	R305	0611079B11	33K, ±5%; 1/10 W	R418 thru 444	0611079A90	4700 ohms, ±5%; 1/10 W	R1036	0611079A98	10K, ±5%; 1/10 W
C260	2113740A79	1000 pF, ±5%; 50 V	C922	2113740A79	1000 pF, ±5%; 50 V	C1169	2113741B69	0.1 uF, ±5%; 50 V	R15 thru 19	0611079A98	10K, ±5%; 1/10 W	R306	0611079A82	2200 ohms, ±5%; 1/10 W	R455	0611079A98	10K, ±5%; 1/10 W	R1037	0611079A46	68 ohms, ±5%; 1/10 W
C263 thru 265	2113740A79	1000 pF, ±5%; 50 V	C923	2113918A05	470 pF, ±20%; 1000 V	C1171	2113741B69	0.1 uF, ±5%; 50 V	R20	0611079A52	120 ohms, ±5%; 1/10 W	R307	0611079A90	4700 ohms, ±5%; 1/10 W	R461,462	0611079A90	4700 ohms, ±5%; 1/10 W	R1038 thru 1040	0611079A74	1K, ±5%; 1/10 W
C266,267	2113740A59	150 pF, ±5%; 50V	C924,925	2113740A79	1000 pF, ±5%; 50 V	C1173	2113741B69	0.1 uF, ±5%; 50 V	R21,22	0611079A98	10K, ±5%; 1/10 W	R308	0611079B13	39K, ±5%; 1/10 W	R502	0611079B23	100K, ±5%; 1/10 W	R1043	0611079D93	909 ohms, 1/10 W; ±1%
C268,269	2113740A79	1000 pF, ±5%; 50 V	C926	2113918A05	470 pF, ±20%; 1000 V	C1175	2113741B69	0.1 uF, ±5%; 50 V	R24,25	0611079A74	1K, ±5%; 1/10 W	R309	0611079B03	15K, ±5%; 1/10 W	R503	0611079A98	100K, ±5%; 1/10 W	R1044	0611079A96	8200 ohms, ±5%; 1/10 W
C270	2113741B69	0.1 uF, ±5%; 50 V	C927,928	2113740A79	1000 pF, ±5%; 50 V	C1177	2113741B69	0.1 uF, ±5%; 50 V	R26	0611079A66	470 ohms, ±5%; 1/10 W	R310	0611079B13	39K, ±5%; 1/10 W	R504	0611079B23	100K, ±5%; 1/10 W	R1201	0611079A01	O ohms, ±5%; 1/10 W
C301	2380090M22	4.007 uF, ±20%; 50V	C929	2113918A05	470 pF, ±20%; 1000 V	C1179 thru 1187	2113741B69	0.1 uF, ±5%; 50 V	R27	0611079A66	470 ohms, ±5%; 1/10 W	R311	0611079B03	15K, ±5%; 1/10 W	R506	0611079A01	O ohms, ±5%; 1/10 W	R1202	0611079A01	O ohms, ±5%; 1/10 W
C302	2113741A45	0.01 uF, ±5%; 50 V	C930	2113740A79	1000 pF, ±5%; 50 V	C1190 thru 1192	2113741B69	0.1 uF, ±5%; 50 V	R28	0611079A01	O ohms, ±5%; 1/10 W	R312	0611079B13	39K, ±5%; 1/10 W	R508 thru 513	0611079A66	470 ohms, ±5%; 1/10 W	R1203	0611079A01	O ohms, ±5%; 1/10 W
C303	2113741B69	0.1 uF, ±5%; 50 V	C932	2113740A79	1000 pF, ±5%; 50 V	C1193	2311049A45	10 uF, ±10%; 35 V	R31	0611079A40	39 ohms, ±5%; 1/10 W	R313	0611079A52	120 ohms, ±5%; 1/10 W	R514	0611079A66	470 ohms, ±5%; 1/10 W	R1204	0611079A64	390 ohms, ±5%; 1/10 W
C304	2113740A71	470 pF, ±5%; 50 V	C933	2113918A05	470 pF, ±20%; 1000 V	C1194 thru 1197	2113741B69	0.1 uF, ±5%; 50 V	R36	0611079A01	O ohms, ±5%; 1/10 W	R314	0611079C58	Resistor chip 39.2K 1/10 W 1%	R517,518	0611079A66	470 ohms, ±5%; 1/10 W	R1205 thru 1208	0611079A82	330 ohms, ±5%; 1/10 W
C305	2113740A79	1000 pF, ±5%; 50 V	C934 thru 936	2113740A79	1000 pF, ±5%; 50 V	C1201	2113741A45	0.01 uF, ±5%; 50 V	R37	0611072A25	100 ohms, ±5%; 1/4 W	R315	0611079D93	909 ohms, 1/10 W; ±1%	R519	0611079A98	10K, ±5%; 1/10 W	R1209	0611079A64	390 ohms, ±5%; 1/10 W
C306	2113741B69	0.1 uF, ±5%; 50 V	C938,939	2113740A79	1000 pF, ±5%; 50 V	C1202	2113918A05	470 pF, ±20%; 1000 V	R37	0611079A26	470 pF, ±20%; 1000 V	R317	0611079C58	Resistor chip 39.2K 1/10 W 1%	R520	0611079B05	18K, ±5%; 1/10 W	R1210	0611079A82	330 ohms, ±5%; 1/10 W
C307	2113741B69	0.1 uF, ±5%; 50 V	C941,942	2113740A79	1000 pF, ±5%; 50 V	C1203	2113740A71	470 pF, ±5%; 50 V	R38	0611077A59	240 ohms, ±5%; 1/8 W	R318	0611079B03	15K, ±5%; 1/10 W	R521	0611079A98	10K, ±5%; 1/10 W	R1211,1212	0611079A98	10K, ±5%; 1/10 W
C309	2311049A45	10 uF, ±10%; 35 V	C943	2113740A33	15 pF, ±5%; 50 V	C1204 thru 1206	2113918A05	470 pF, ±20%; 1000 V	R39,40	0611079A98	47K, ±5%; 1/10 W	R320	0611079A82	3900 ohms, ±5%; 1/10 W	R527,528	0611079A01	O ohms, ±5%; 1/10 W	R1213,1214	0611079A01	O ohms, ±5%; 1/10 W
C312	2113741B69	0.1 uF, ±5%; 50 V	C944	2113740A79	1000 pF, ±5%; 50 V	C1207	2113741B69	0.1 uF, ±5%; 50 V	R42	0611079A01	O ohms, ±5%; 1/10 W	R321	0611079D69	511 ohms, 1/10 W; ±1%	R529	0611079B47	1 MEG, ±5%; 1/10 W	R1215	0611079A98	10K, ±5%; 1/10 W
C315,316	2113741B69	0.1 uF, ±5%; 50 V	C1001	2311049A21	22 uF, ±10%; 20 V				R43	0611079A98	10K, ±5%; 1/10 W	R322	0611079B07	22K, ±5%; 1/10 W	R608	0611079A98	10K, ±5%; 1/10 W	R1216 thru 1223	0611079A66	470 ohms, ±5%; 1/10 W
C317	2113741B69	0.1 uF, ±5%; 50 V	C1002	2113741B69	0.1 uF, ±5%; 50 V				R44	0611079A74	1K, ±5%; 1/10 W	R323	0611079E09	Resistor: chip 121.0K 1/10 W 1%	R609,610	0611079A01	O ohms, ±5%; 1/10 W			
C318	2113740A45	10 uF, ±10%; 35 V	C1003	2311049A45	10 uF, ±10%; 35 V	CR2	4813833B01	diode (see note): Schottky type	R45	0611079A98	10K, ±5%; 1/10 W	R324	0611079C58	Resistor: chip 39.2K 1/10 W 1%	R651,652	0611079B33	270K, ±5%; 1/10 W			
C320	2113741A45	0.01 uF, ±5%; 50 V	C1004 thru 1007	2113741B69	0.1 uF, ±5%; 50 V	CR201	4882290T02	Hot Carrier	R153,154	0611079A98	10K, ±5%; 1/10 W	R325	0611079G09	12.1K, 1/10 W; ±1%	R653	0611079B03	15K, ±5%; 1/10 W	S0 thru 3	4083621T01	pushbutton, spst
C322	2311049A23	47 uF, ±10%; 10 V	C1009	2311049A45	10 uF, ±10%; 35 V	CR252 thru 257	4813833C05	dual 70 V	R155 thru 158	0611079A62	33									